



swope HEALTH

THEN TRANSFORMATION NOW

2024 ANNUAL REPORT

Swope Health today is in 23 locations in Missouri and Kansas, has a fleet of five mobile care units, and will soon become a teaching health center.

INTRODUCTION

Still Standing Strong For Community Health

It was May 27, 1968, and Kansas City was still reeling from the race riot, a response to the murder of Dr. Martin Luther King, Jr., when I was appointed as the city's Director of Human Relations. I was the first Black director in city government, but within 90 days I wasn't the only one – **James I. Threatt** was named director of the Model Cities program.

Jim was my friend and colleague. He understood very well the disparities that existed in the community and addressing these injustices was his highest priority. Jim thought Model Cities could do more.

I was there in 1969 when Jim established the Model Cities Health Corp. as an entity independent from the city. As the founding director, Jim raised money from the community and secured a \$100,000 grant from the federal Model Cities initiative, a campaign in President Lyndon B. Johnson's war on poverty.

Jim brought together a handful of determined individuals who supported the practice of social medicine and whole-person care, and launched a small clinic in the basement of the Metropolitan Missionary Baptist Church.

A couple of years later, in 1971, a young man named **E. Frank Ellis** interviewed for a clinic manager position and promised he could improve the fledgling center.

That clinic grew to become Swope Health.

It also gave rise to sister organizations Swope Community Builders and the Applied Urban Research Institute – each forged to address issues of disparity in healthcare, economic development, education, and career opportunities in Black Kansas City communities.

Today, 56 years later, Swope Health stands strong as the voice of community health. I am proud to support Swope Health, which still works demonstrating leadership and fighting for justice with the same passion as I saw in its founders on Day 1.

Sincerely yours,



Alvin L. Brooks

President Emeritus AdHoc Group Against Crime



ALVIN L. BROOKS

Author of

BINDING US TOGETHER

A Civil Rights Activist Reflects on a Lifetime of
Community and Public Service

Transformative Change

At least once a year, I make a point of reviewing Dr. Martin Luther King Jr.'s *Letter from a Birmingham Jail*. I do so to keep his voice present in my thoughts and rooted in my actions as President and CEO of Swope Health.

Dr. King seldomly responded to critics, but in the now-famous letter, he felt it necessary to call out the social critique and unfair labeling of civil rights protests as “untimely and unwise.” The civil rights leader highlighted the contrasting impatience for social unrest with the tolerance of racial inequality – apathy for African Americans and other minoritized communities as it related to unjust treatment, brutality, and unequal application of the law.

Today harkens to Dr. King's letter, a moment that will require discomfort.

In one of the strongest lines of his letter, Dr. King explains his presence in Birmingham: *I am here because injustice is here.*

There is a parallel for us: Swope Health exists because injustice persists. In health disparities, yes, but more so for all things that impact health – **economic, environmental, educational, and power disparities.**

The theme of this year's report is transformation. It highlights a dramatic shift, a bolder vision, for where we deliver care, when we deliver care, and why we deliver care. Some of our transformative actions:

- **Becoming a teaching health center, educating the next generation of caregivers in family medicine and dentistry, providing jobs and career opportunities.**
- **Investing in economic development in Kansas City's East Side, through the purpose-built Swope Health Village, set to break ground this summer. The development will deliver housing, senior care, food gardens, and more.**
- **Funding education in medical assistant careers through our partnership with Metropolitan Community College and the Full Employment Council.**
- **Delivering innovative and compassionate services for older Kansas Citians aging in place through PACE KC.**
- **Expanding our reach of healthcare services, including a new location in St. Joseph, Mo., coming Summer 2025.**

I invite you to explore the breadth and depth of our work highlighted in this report. I welcome your engagement in and support for our efforts for transformative change. As Dr. King said, “The time is always ripe to do right.”

Sincerely,



Jeron Ravin, J.D.
President & CEO, Swope Health





Stephanie
Boyer



Alissia Canady



Jack Cannon
III, CFA, CTP



Marvin E.
Carolina, Jr.



Aaron G.
Ellison, MD



Tresia Franklin



Melika T.
Harris



Tom Kokjer



Jack McCanna



Zoraya
Rowlands



Dred Scott,
EdD



James G. Scott



Michelle
Searcy



Julia Vargas,
EdD



Jerry Williams

Privileged To Serve

As Chairman of the Board of Directors of Swope Health, I invite you to explore the stories of our accomplishments in this, our 2024 Annual Report. I hope you will see the intense respect we have for our community and the people we are privileged to serve.

In 2024, we served 54,716 unique patients. A vast majority – 93 percent – earn less than 200 percent of the Federal Poverty Level. For perspective, a person at the 200 percent level earns \$2,510 a month, or \$5,200 a month for a family of four.

What's even more impressive to me than the number of individuals we serve is the number and variety of the services we deliver. This year, we provided **more than 585,000 services** – prescriptions, rides, counseling sessions, day programs, vaccinations, well-woman visits, dental exams, vision screenings, and so much more.

And we are continuing to expand our services. We have just opened a new facility, **87th Street Place**, to provide residential care for people with co-occurring developmental disabilities; next year we will inaugurate our medical and dental residency programs, expanding our reach into teaching the next generation of care providers. And, starting in 2025, we will embark on a community-building initiative, bringing together a hub of housing, wrap-around services, and senior care, called **Swope Health Village**.

If you would like to learn more, we welcome your support as a patient, donor, volunteer, or partner.

Sincerely,

Juan Manuel Rangel, Jr.
Chair, Swope Health Board of Directors



"Service to our community is a privilege; it is a commitment and responsibility that we deliver with love and pride."

Juan Manuel Rangel, Jr.

Strategic Plan In Progress

In 2021, Swope Health began implementation of a five-year strategic plan built on the pillars of **access and convenience, quality and whole-person care, community engagement and value creation, and investing in our associates.** In 2024, we reached the midpoint milestone of our strategic plan, and had multiple successes.

Table of Contents:



Quality & Whole-Person Care

Pages 6–18



Access & Convenience

Pages 19–21



Investing In Our People

Pages 22–26



Value Creation

Pages 27–32

the opening of new services. By identifying and tapping into emerging markets, we are securing Swope Health's long-term growth and sustainability.

We have implemented strategies to reduce barriers to care. Our focus on team-based integrated care ensures that patients are assigned to primary care providers and engaged in multiple services, leading to more coordinated and comprehensive care. Additionally, our commitment to improving our quality of care benefits from this team-based approach.

Through our training and development initiatives, we have equipped associates to excel in their roles. This investment in our associates' professional development has led to higher job satisfaction and retention, and a more motivated and competent workforce.

Our initiatives to connect patients with community resources and referrals have also significantly improved overall community health. They underscore our commitment to holistic care, addressing the broader needs of our patients (especially related to the social drivers of health) and contribute to better long-term health outcomes. By building strong relationships with community partners, hosting events, and advocating for health-related issues, we have strengthened the Swope Health brand and amplified our social impact.

Increasing patient access to healthcare has been a cornerstone of our strategy.

Together, we are committed to driving change, creating value, and improving lives, making our vision for a healthier future a reality for all.

By reducing patients' wait times for care and optimizing appointment scheduling, we've streamlined operations and enhanced service delivery—which increased patient satisfaction and positioned us for revenue growth. We have worked to expand our footprint, through

SWOPE HEALTH LEADERSHIP 2024



Brandi Finocchiaro
Chief Strategy Officer



Naomi Jamal, MD, MPH, CMQ
Chief Health Officer



Megan Krohn, DDS
Executive Vice President, Dental



Mark Miller
Consultant, Behavioral Health



Josette Mitchell
Executive Vice President, Behavioral Health



Essence Montgomery
Chief Financial Officer



Edward Murphy
Chief Administrative Officer



Kelly Murphy
Chief Human Resources Officer



Naimish Patel
Consultant, Finance



Heath Rath
Executive Director, PACE KC



Angela Smart
Chief Development & Communications Officer, Executive Director of Swope Health Foundation



Thurston Smith, PhD
Chief Information Officer



Kenneth Thomas, MD
Executive Vice President, Children's Services

Quality & Whole-Person Care

In our first year, we provided basic medical services to approximately 2,000 patients. In 2024, we provided expanded services to 54,716 patients.

Swope Health Services



FAMILY MEDICINE

- Wellness exams
- Acute care
- Chronic conditions such as asthma, diabetes and high blood pressure and pain management
- Immunizations and vaccines
- Preventive health education
- Hepatitis C testing and treatment
- Mobile medical services

WOMEN'S HEALTH

- Ob/Gyn care
- Minor surgical procedures
- Prenatal and postpartum care
- Family planning
- Well-woman exams
- Cancer screenings

PEDIATRICS

- Well-child care
- Immunizations
- Acute care
- Special needs care

VISION

- Eye exams, diagnosis and treatment
- Glasses and contacts



PHARMACY

- 340B Drug Pricing Program
- Drive-thru services
- Delivery services

RADIOLOGY

- X-Ray, Mammography, Ultrasound

LABORATORY

- In-house lab testing and screenings



DENTAL

ADULT/PEDIATRIC PREVENTIVE CARE

- Exams, oral hygiene counseling, nutritional counseling, radiographs, risk assessment, dental sealants, and fluoride applications

PERIODONTICS

- Prophylaxis, periodontal maintenance, debridement, scaling, and root planing

RESTORATIVE

- Amalgam, resin and glass ionomers

OUR HISTORY

1969 E. Frank Ellis leads Model Cities Health Corporation, now Swope Health.

1978 Relocated to a larger location at 4900 Swope Pkwy., Kansas City, MO.

1980 Dental and Behavioral Health services are added.



Swope becomes a United Way agency.
Corporate name change to Swope Parkway Health Center.

1969

1978

1980

1986

1970

Model Cities Comprehensive Neighborhood Health Center opens in the basement of Metropolitan Missionary Baptist Church at 2310 E. Linwood Blvd., Kansas City, MO.



1981

National quality accreditation by The Joint Commission.

1987

Healthcare for the Homeless program established.

ORAL SURGERY

- Tooth extractions
- Pre-prosthetic surgeries

ENDODONTICS

- Anterior and premolar root canals

PROSTHODONTICS

- Complete and partial dentures
- Single crowns
- Multi-unit bridge
- Lab work

ACUTE CARE

- Adult and pediatric

MOBILE DENTAL SERVICES



PODIATRY

- Diabetic foot care
- Arthritis and dermatitis care
- Fungal treatment including Athlete's Foot
- Ingrown toenail treatment
- Corn, callus, and bunion treatments



BEHAVIORAL HEALTH

ADULT SERVICES

- Psychiatry
- Case management
- Individual and group therapy
- 24/7 crisis support
- Supported employment
- Substance use disorder treatment
- Medication-assisted treatment
- Residential care facilities

CHILDREN'S SERVICES

- Psychiatry
- Medication evaluation and management
- Case management
- Individual outpatient therapy
- Family therapy
- Play therapy
- 24/7 crisis support
- Adolescent substance-use disorder treatment
- School-based collaborations

OUTREACH

- Mobile medical and dental care
- Prescription assistance
- Healthcare for the Homeless
- Housing, employment/job training, and emergency assistance
- Disability application, food stamps, TANF assistance
- Outreach Pantry



SUPPORT

- Healthy Start program
- WIC program
- Missouri Medicaid and federal insurance Marketplace enrollment
- Transportation services
- Translation services

Curtis Franklin Lodge and Kanza Harris House established to provide housing and care for Behavioral Health patients.

Swope Health merges with Douglas Community Health Center in Kansas City, KS.

Capital campaign completed and new facility (Swope Health Central) at 3801 Blue Pkwy. in Kansas City, MO opens.

A significant expansion of Behavioral Health Services is launched, adding mental health court services, faith- and school-based substance abuse prevention, children's psychiatric rehabilitation services, and behavioral health in primary care.

1991

1995

2001

2002

1993

2000

2003

Northland Health Clinic opens in Riverside, MO.

Brown Avenue Clinic (now Swope Health West) opens in the Quindaro area of Kansas City, KS.

Northwest Community Health Center (now Swope Health Independence) opens in Independence, MO.



Corporate name change to Swope Health Services.

Serving Jackson, Cass, Clay, and Platte Counties in Missouri and Wyandotte and Leavenworth in Kansas

9 FAMILY CARE CLINICS



SWOPE HEALTH CENTRAL 3801 DR MARTIN LUTHER KING JR BLVD, KANSAS CITY, MO



SWOPE HEALTH BELTON
204 E NORTH AVE, BELTON, MO



SWOPE HEALTH HICKMAN MILLS
6406 E 87TH ST, KANSAS CITY, MO



SWOPE HEALTH INDEPENDENCE
11320 E TRUMAN RD, INDEPENDENCE, MO



SWOPE HEALTH MAPLE WOODS
3100 NE 83RD ST, STE 1001, #140,
KANSAS CITY, MO



SWOPE HEALTH NORTHLAND
2906 NW VIVION RD, RIVERSIDE, MO



SWOPE HEALTH PLATTE COUNTY
7925 NW 110TH ST. KANSAS CITY, MO



SWOPE HEALTH WEST
4835 STATE AVE, KANSAS CITY, KS



SWOPE HEALTH WYANDOTTE
21 N 12TH ST, #400, KANSAS CITY, KS



PACE KC ADULT WELLNESS CENTER
4141 DR MARTIN LUTHER KING JR BLVD
KANSAS CITY, MO

Swope Health acquires a state-of-the-art custom-built 39-foot Mobile Medical Clinic equipped with two exam rooms, laboratory, restroom, and wheel chair lift.

2006

Swope Health Services celebrates 40 years of service to the community.

2009

Behavioral Health residential facility Swope Gardens opens in Kansas City, MO.

2011

Swope Health Belton opens at 206 E. North Avenue.

2014

Swope Health Maple Woods opens in Northland Human Services building, Kansas City, MO.

2017

2008

Mobile dental van begins service to children in several area school districts.

2010

Swope Health East opens in Comprehensive Mental Health Services, Independence, MO.

2012

Behavioral Health residential facility Penn Place is acquired in Kansas City, MO.

2016

Swope Health Hickman Mills opens in the Loma Vista Office Building, Kansas City, MO.

11 KIDSCARE HEALTH & DENTAL CLINICS



TENNEY PEDIATRICS
6501 E 87TH ST, KANSAS CITY, MO



EMMANUEL FAMILY & CHILD DEVELOPMENT CENTER
4736 PROSPECT AVE, KANSAS CITY, MO



EXCELSIOR SPRINGS EARLY CHILDHOOD CENTER
500 N JESSE JAMES RD, EX SPGS, MO



OPERATION BREAKTHROUGH
3039 TROOST AVE, KANSAS CITY, MO



UNIVERSITY ACADEMY
6801 HOLMES RD, KANSAS CITY, MO



LEAVENWORTH PEDIATRICS
1001 6TH AVE, LEAVENWORTH, KS

KIDSCARE AND DENTAL CARE ALSO AVAILABLE AT SWOPE HEALTH CENTRAL, HICKMAN MILLS, INDEPENDENCE, NORTHLAND, AND WYANDOTTE.

8 BEHAVIORAL HEALTH TREATMENT & RESIDENTIAL FACILITIES



87TH STREET PLACE
6412 E 87TH ST, KANSAS CITY, MO



IMANI HOUSE TREATMENT CENTER
3950 E 51ST ST, KANSAS CITY, MO



BENTON HOME
2614 BENTON BLVD, KANSAS CITY, MO



FRANKLIN LODGE
3860 E 60TH ST, KCMO



KANZETTA HARRIS HOUSE
3859 E 59TH TERR, KCMO



PENN PLACE
3915 PENNSYLVANIA AVE, KCMO



SWOPE GARDENS
3830 E 60TH ST, KCMO

BEHAVIORAL HEALTH TREATMENT ALSO AVAILABLE AT SWOPE HEALTH CENTRAL.

Swope Health West opens in new location on State Ave. in Kansas City, KS.
In response to the COVID-19 pandemic, Swope Health administered over 16,000 tests and vaccinations metrowide.

2020

PACE KC Adult Wellness Center groundbreaking.
Ribbon cutting ceremony for the opening of Swope Health KidsCARE Tenney Pediatrics.

2022

First PACE KC members enrolled.
New KidsCARE clinic opens in University Academy.
New Swope Health clinic opens in Platte County.
New 87th Street residential Behavioral Health facility opens.
Swope Health Northland expands to include Pediatrics & Women's Health services; Swope Health Belton adds a new Dental clinic.

2024

2019

Swope Health celebrates 50 years and appoints new President and CEO, Jeron Ravin, J.D.



2021

First KidsCARE clinic opens in the Emmanuel Child & Family Center and first KidsCARE Dental clinic opens in Operation Breakthrough.

2023

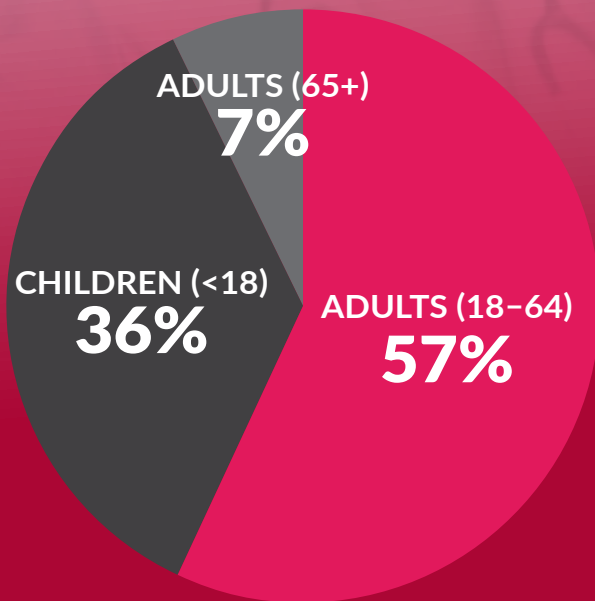
Swope Health KidsCARE expands service with clinics opening in Excelsior Springs, MO and Leavenworth, KS.
Swope Health Village kicks off featuring a multi-phase urban redevelopment including clinics and housing.
Completion of the new PACE KC Adult Wellness Center.

Who We Served

TOTAL PATIENTS SERVED IN 2024

54,716

PATIENTS BY AGE



PATIENTS BY RACE

BLACK/AFRICAN AMERICAN - 45%



WHITE - 33%



AMERICAN INDIAN/ALASKA NATIVE - 1%; ASIAN - 1%;
NATIVE HAWAIIAN/OTHER PACIFIC ISLANDER - 1%; MORE THAN
ONE RACE - 2%; UNREPORTED/CHOSE NOT TO DISCLOSE - 17%

PATIENTS BY ETHNICITY

HISPANIC/LATINO - 19%



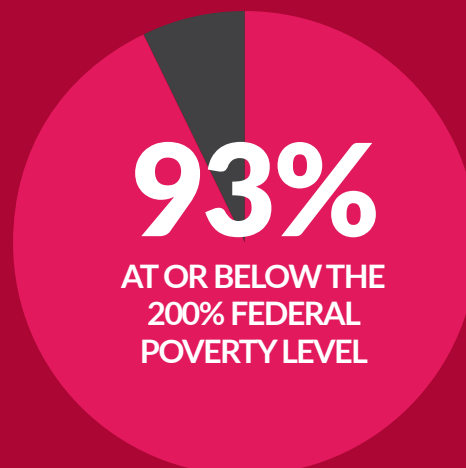
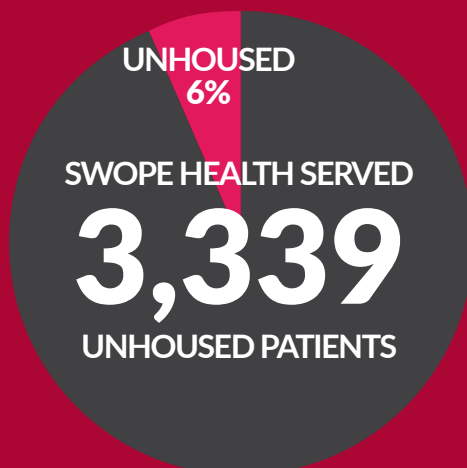
NOT HISPANIC/LATINO - 75%



UNREPORTED/CHOSE NOT TO DISCLOSE - 6%

 SWOPE HEALTH PATIENTS
BEST SERVED IN LANGUAGE
OTHER THAN ENGLISH - 12%

PATIENT CHARACTERISTICS



Source: HRSA Swope Health 2024 UDS Report. Percentages rounded to the nearest whole number.

TOTAL NUMBER OF SERVICES PROVIDED IN 2024

585,279



104,906
PRIMARY CARE



14,442
PEDIATRICS



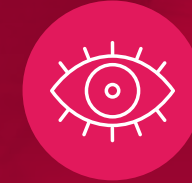
35,781
DENTAL CARE



42,330
CHRONIC CONDITIONS
(ASTHMA, DIABETES, HYPERTENSION)



195,888
BEHAVIORAL
HEALTH SERVICES



4,775
OPTOMETRY



4,711
DIETICIAN OR
PODIATRIST

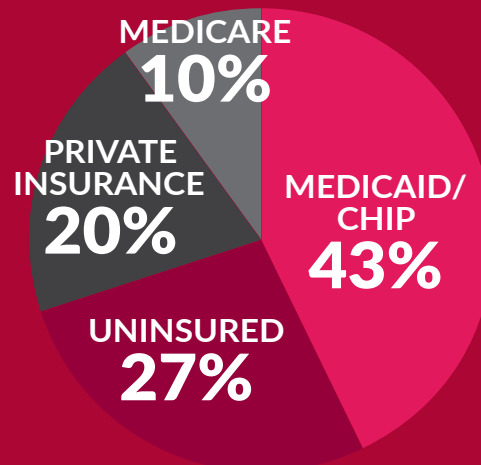


136,809
PRESCRIPTIONS
FILLED



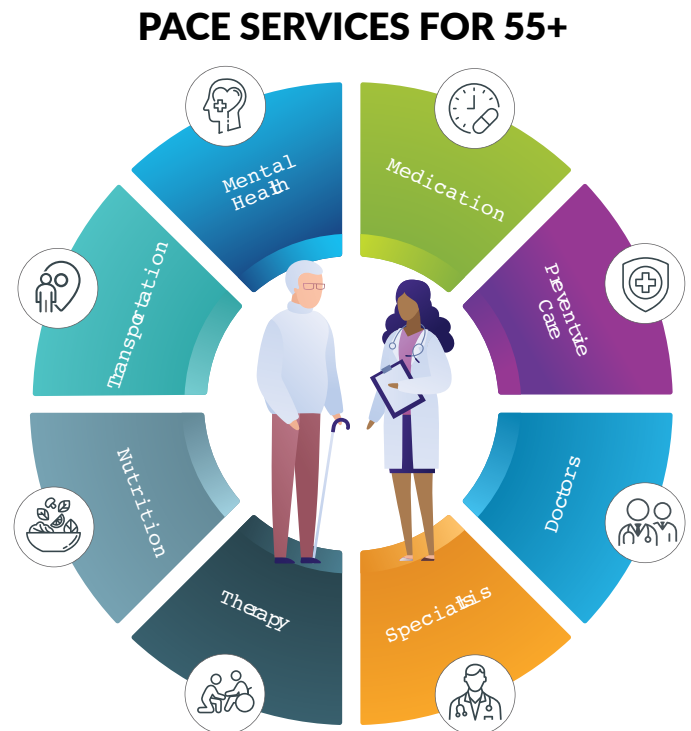
45,637
TRANSPORTATION
SCHEDULED

PATIENT
INSURANCE STATUS



Swope Health Quality Initiative National Achievements

- Swope Health is the **ONLY** federally qualified health center in the nation designated as a **Certified Community Behavioral Health Center (CCBHC)** and that operates a **Program for the All-Inclusive Care for the Elderly (PACE)**.
- Full accreditation by **The Joint Commission** – Just 20% of all community health centers in the United States are accredited by the commission.
- **National Committee for Quality Assurance (NCQA) Patient-Centered Medical Home** certification maintained at all eligible Swope Health locations.
- Certification maintained from the **Commission on Accreditation of Rehabilitation Facilities**.
- Received four quality awards in 2024 from the **Health Resources and Services Administration (HRSA)**. HRSA-funded health centers are the healthcare home for many of America's historically underserved communities, including people in poverty, uninsured people, rural residents, and military veterans.



Answering The Call For Help

In July 2022, the 988 national suicide prevention and mental health crisis line was launched and Swope Health took a leadership role in developing the mobile response component for the lifeline in the urban core of Kansas City.

The Kansas City region was divided into four areas, each assigned to an organization to cover. Swope Health and University Health collaborated to develop a coordinated rapid-response plan, sharing the staffing

and management of the local 988 lifeline calls in their jointly managed areas. The Missouri Department of Mental Health applauded the unique partnership.

Now, after a couple of years of operation, the national mental health lifeline is answering a growing number of calls. **In 2024, the lifeline answered 5.7 million calls nationally, up from 4.4 million in 2023.** Since its inception, the national service has answered a total of 14.5 million calls, texts, and chat messages.

If calls to the lifeline can be resolved or addressed on the call, they are, and if not, a mobile response unit is dispatched.

In 2024, the Swope Health-University Health collaboration received 198 dispatch requests, up from 52 in 2023.



The service reduces the load on law enforcement calls while providing appropriate care for the situation, avoiding unnecessary ambulance or hospitalization, or law enforcement involvement.

“We are proud to provide our expertise in crisis intervention, suicide prevention, and trauma-informed care to people in need through the 988 lifeline,” said **Josette Mitchell**, executive vice president of Behavioral Health. “The service is saving lives.”



New Prenatal Care Classes

Focus on improved maternal and infant health outcomes.

In 2024, Swope Health added group prenatal classes as a new free service for moms-to-be, at any stage of their pregnancy.

In the U.S., people of color, especially Black and Hispanic women, and those with low incomes are at higher risk for adverse maternal and infant health outcomes. With funding from the **March of Dimes**, Swope Health is leading these classes to reduce health disparities and improve health outcomes.

The monthly series covers what to expect during pregnancy and how to prepare for labor and healthy childbirth. Topics included health issues for women, like risk factors for hypertension and diabetes, as well as tips on dealing with mood swings, tiredness, and back pain.

The program features providers, community health workers, doulas, social workers, and behavioral health professionals. Additional Swope Health associates, like dietitians and Medicaid enrollment specialists, also provide resources.

The participants, usually a group of six to 10 women, meet casually in the Community Room for classes at Swope Health Central.

The women are encouraged to share stories of what they were experiencing, building trust and friendships. They learn ways to advocate for themselves and seek answers for specific questions. The classes provide informational, physical, and emotional support.

“The patients really enjoy the class,” noted **Dr. Naiomi Jamal**, chief health officer. “They could engage in long, in-depth conversations with providers and peers going through the same things.”

Swope Health invites community partners, like **Uzazi Village**, to participate and broaden the discussion, which varies from month to month based on the needs of the women attending.

“This gives a richer and fuller experience to the patients, and empowers them to help themselves and each other,” said Dr. Jamal. “Studies have shown this kind of community-based approach can reduce health disparities and improve health outcomes.”

Stepping Into The Light

There was a time when Clifton Harris didn't believe in himself.

Not anymore. Harris, 49, a Kansas City native, is now living independently, caring for himself, counting his successes, and making plans for the future.

About five years ago, Harris was in a dark place. "I was telling myself I was a nobody and I started believing I was a nobody," he said. He had lost his mother and his support system, was drinking and using drugs, and was angry and depressed. But with the encouragement of his aunt, he came to Swope Health.

Harris started in therapy, moved into Swope Health's Residential Program at Benton Place, and joined the Day Program in Behavioral Health.

The Swope Health team, including a psychiatrist, therapist, case manager, and residential associates, showed Harris respect and made him feel safe and cared for. "They listened to me, gave me encouragement, asked what I thought," he said. "They gave me courage." The courage, he says, allows him to smile, to communicate, try again.

Swope Health associates witnessed the changes. "When Clifton first came to Benton, he was very timid and lacked confidence in himself. He told staff that he felt like he wasn't good enough to be here," said **Nadia Walker**, intensive mental health technician.

Nadia said she and her associates at Benton worked to rebuild his confidence and self-esteem, making him feel safe and welcome, along with helping him achieve his goals. It was at an afternoon barbecue when she saw evidence of their success.



"To see Clifton taking charge, stepping up to help and even redirecting me, giving suggestions to staff on how to barbecue, was amazing," she said. "To see his smile and confidence outshine the sun! And when his housemates complimented him on the food, he had a tear in his eye and said 'I did it! My uncle would be proud of me.'"

She continued: "This is what we take pride in here at Benton House, working with and teaching our residents skills and self-confidence."

Harris later moved into Penn Place, a Swope Health residential facility that offered more independence and helped him develop even more trust and confidence. He became more social with others, volunteering at Thelma's Kitchen. "Every new face is an opportunity," he says.

Harris now lives on his own. He has been clean and sober for 15 months – and counting. "All this effort and caring at Swope Health, it helped me dedicate myself to my mental and physical health," he said. "On a scale of 1 to 10, I am at 10 and I can still improve."

And about those plans for the future? "It's my dream to be a coach," he said. He envisions working with kids interested in football, listening to them, giving them encouragement, helping them understand themselves.

Swope Health has provided behavioral healthcare for adults with chronic mental illness since 1991.

PACE KC Celebrates First Year

Carol had resigned herself to a life within the four walls of her basement apartment. Matthew hadn't moved his legs in a year and a half. Stan had been confined to a recliner. Jackson, after suffering a stroke, had to relearn everything – even how to laugh.

Today, all four of them are living more independently and gaining new skills, self-confidence, and friendships, thanks to PACE KC.

Carol, Matthew, Stan, and Jackson are among the first clients at PACE KC, Swope Health's new Program of All-Inclusive Care for the Elderly. Each of the four clients visits the PACE KC Adult Wellness Center weekly for a range of proactive and preventive care services, personalized to their individual needs and goals.

PACE KC offers support for all aspects of a healthy life – meals and individual nutrition plans, exercise and physical/occupational therapy, primary healthcare and dental care, medication, and, importantly, social connections and interaction. The Adult Wellness Center offers a library, arts and crafts, a movie room, outdoor recreation space, board games and activities, a piano, computer lab and more.

Swope Health broke ground on the \$15 million Adult Wellness Center in May 2022. The 34,000-square-foot facility was completed on the Swope Health campus in October 2023.

With authorization from state and federal authorities, PACE KC began enrolling clients in its health insurance plan in March 2024. PACE KC is the first and only provider of PACE services in Jackson County.

As of March 2025, PACE KC serves 33 clients – and counting.

At the PACE KC one-year anniversary in May 2025, **Heath Rath**, executive director, recalled the many steps toward opening and operating the center, including meetings to establish the 22 current referral partners and more than 60 visits to housing complexes, churches, health fairs,

and networking events to spread awareness of PACE KC.

The PACE KC team is developing a larger referral network to achieve its goal of serving 75 enrolled clients by the end of the year. The goal is to attract at least 20 new referral partners to join the current list, which includes Swope Health, St. Luke's, Legal Aid, Ability KC, Comprehensive Mental Health, and many more.

Since opening, the PACE KC organization has grown to 29 positions, most joining an interdisciplinary care team made up of healthcare providers, behavioral health professionals, social workers, life enrichment specialists, physical and occupational therapists, transportation associates, home care coordinators, dietitians, and more.

All these roles work together to create highly personalized care plans for clients.

"Our goal is to help our participants stay healthy, happy, and independent," Rath said. "PACE KC is an innovative program providing a proactive and hands-on approach to care of the mind, body, and spirit of each individual."

The program includes access to prescription drugs and over-the-counter medications, and equipment like wheelchairs, walkers, eyeglasses, hearing aids and more. The programs at the Adult Wellness Center include classes, fitness sessions, outings, games, meals and recreational activities that promote socialization and a positive, active lifestyle.

To learn more, please visit PACEKC.org.

PACEKC
swopeHEALTH



"The power of socialization, interactions, and mental challenges cannot be underestimated. Socialization is the first and most beneficial gift our clients experience."

Brendan McShane, PACE KC Occupational Therapist

Leadership In HIV Prevention, Care

Supporting a bold national goal to end the HIV epidemic in the U.S. by 2030, Swope Health has expanded its HIV screening and other preventive measures across all clinics including satellite locations.

HIV stands for Human Immunodeficiency Virus. It is a virus that attacks the cells the body relies on to fight infection. Left untreated, HIV can lead to AIDS (Acquired Immunodeficiency Syndrome). HIV spreads through human contact and bodily fluids, most commonly during sex or injection drug use.

There are about 1.2 million people in the U.S. with HIV, and about 13 percent of them are not aware they have the virus. Data shows that Black and Hispanic men, are disproportionately affected by HIV.

Swope Health has implemented a three-step program to support the national goal to end the epidemic.

Early screening is the first step.

“When HIV is diagnosed early, an individual can be treated to suppress the virus,” said **Dr. Naomi Jamal**, chief health officer.



At Swope Health, all patients age 15 and older are encouraged to get tested, ideally during regular exams. All of our primary care locations now provide screenings for HIV, including rapid in-office testing.

“This is a significant expansion of our testing capability,” Dr. Jamal said, noting that Swope Health has screened 60 percent of its primary care patients – a far higher rate than most health centers.

The second step is promoting awareness of HIV.

Swope Health has invested in training associates in de-stigmatizing HIV and creating awareness around preventive measures such as HIV PrEP (short for Pre-Exposure Prophylaxis).

Swope Health HIV Champions (pictured above) proudly wear bold T-shirts that say “Ask me about HIV PrEP” and encourage patients to share questions or concerns. The conversations are confidential, in plain language, and fact-based.

To date, 19 providers in all Swope Health Primary care clinics, offer HIV PrEP and PEP. Each patient’s care is managed by the HIV Prevention team that includes a community health worker and a nurse care manager.

The third step in the HIV program is providing patient medication and linkage to care.

Swope Health works with various community partners to connect patients to treatment services.

Mobiles, Message, and Divine Design

The details are intentional, interwoven and intricate—yet massive and impossible to miss: Swope Health’s newest Mobile Dental Unit, purchased with a generous gift from Resurrection, commands attention.

“Willie”—the name given by Swope Health’s Mobile Dental Team (pictured right)—is bright and inviting, and intentionally designed that way to put the children it serves at ease. Through the mobile dental services program, Swope Health’s mobile dental unit team provides care for nearly 3,000 children annually in collaboration with 85 Kansas and Missouri organizations. Willie is one of two Dental units in Swope Health’s fleet.



Since 2009, **Resurrection** has gifted nearly \$23 million through its annual Candlelight Christmas Eve Offering to fund Kansas City-based projects and global initiatives. The church selects organizations and programs with a purpose of transforming the lives of children and families. Swope Health was fortunate to be the benefactor in 2023.

“This partnership reflects an intersection of mission and vision,” said **Jeron Ravin, J.D.**, President and CEO of Swope Health. “Resurrection has a vision to close opportunity gaps and provide a future with hope for all children, which perfectly complements our mission to provide accessible, comprehensive, quality care to all—particularly, to those in marginalized and underserved communities. We are incredibly grateful to each person who gave an offering, as well as to the Resurrection Church leadership team for supporting our work and investing in our community.”

In addition to “Willie,” two mobile care units were recently added to Swope Health’s fleet: a new pediatric medical unit that will provide care through school-based services and community events, and a new medical unit that primarily serves adults, visiting Kansas City-area homeless shelters and other organizations every week.

Swope Health Missouri Clinics Expand

- **Swope Health Belton**, 206 E. North St., now offers dental care, with four new dental exam rooms, a dentist, dental hygienist, and two dental assistants.
- **Swope Health Hickman Mills** opened a new location at 6404 E. 87th St. The new clinic offers a larger space for care and added services, including dental care.
- In March, **Swope Health Northland** at 2906 NW Vivion Road, revealed the women’s health and pediatric services expansion.





To date, 841 kids have received care at our Excelsior Springs clinic for services including chronic disease management, well-child exams and physicals, immunizations, and dental exams and treatment. Optometry services will be coming soon.

KidsCARE Excelsior Springs Celebrates One-Year Anniversary

The Swope Health KidsCARE Excelsior Springs Clinic celebrated its one-year anniversary in January 2025. The clinic is supported by the **Mid-America Regional Council (MARC) Head Start** program at the Excelsior Springs Early Learning Center.

Swope Health KidsCARE clinics are co-located with two other Head Start programs at the **Emmanuel Family and Child Development Center** and at **Operation Breakthrough**. Swope Health also provides mobile pediatric/dental services for all **MARC Head Start** centers.

"It is a unique and effective partnership," said **Dr. Kenneth Thomas**, executive vice president for Children's Services at Swope Health, "to have a Head Start provider collaborating with a health center to establish a medical home for Head Start children." The partnership model has drawn regional and national recognition for its coordinated approach to providing medical, dental, and other healthcare needs.

In 2024, the Mobile Pediatric Unit, Head Start clinics, and health fair outreach logged more than 400 encounters.

"Healthy children go on to be more successful in school," Dr. Thomas said. "That's why this collaboration is so important."



Swope Health Kansas Women's and Children's Center



“This project is another example of Swope Health partnering and collaborating with others to create win-win projects. We are excited to serve more families on the Kansas side in this incredible new Women’s and Children’s Center.”

Jeron Ravin, J.D., President & CEO

At the corner of 7th Street and State Avenue in Kansas City, Kansas, a beautiful new building is taking shape. The **Kansas City Kansas Community Education, Health and Wellness Center** is a collaboration between Swope Health, **Kansas City Kansas Community College (KCKCC)** and **Community America Credit Union**. Swope Health will own the entire fourth floor for a new 16,000- square-foot Swope Health Kansas Women’s and Children’s Center, which will open in the spring of 2026. This project represents a combined \$62 million investment, turning a blighted city block into a new landmark destination for downtown Kansas City, Kansas.

The Women’s and Children’s Center will provide Ob/Gyn services, well-woman care, pediatrics, mental health services, a WIC office, and a dental clinic. These services will be offered in a setting that cares deeply for Kansas families by offering additional support and health education, such as prenatal group classes for pregnant moms.

Adding to the appeal of the new state-of-the-art Center is our collaboration with the **Kansas City Zoo**. The Zoo is helping us with interior graphics and art that will feature the Zoo’s animals. We are working with the Zoo to provide free tickets for Kansas families, and to strengthen Wyandotte County’s connection to the Zoo and its programs.

Swope Health Associate Awards

On December 12, at Swope Health's annual Holiday Celebration, President and CEO **Jeron Ravin, J.D.**, recognized a few outstanding associates for their service in 2024. Honored individuals received certificates and monetary awards.

Patient Access Award:

Terri Martinez is an LPN Care Coordinator who has worked for Swope Health for over nine years. Over her tenure, she has worked to improve processes and has consistently shown up as a calming voice in times of pressure. Terri's advocacy for patients is unwavering and she is regarded as an expert by her peers and external organizations.

Patient Experience Award: **Sarai Linares**,

Medical Assistant, splits her time between two Swope Health clinics, while intentionally observing each patient she encounters to provide them with the best possible care.

Her resilience and dependability are a testament to her dedication to providing quality care wherever and however she can.

Clinical Support Award: **JoBeth Herrick**

serves as a manager in two Swope Health Clinics and as a Clinic Educator. Despite the time and attention that her duties demand, she is responsive and accessible to all associates who may need her. She is often described as patient focused and a "go-to person."

Dental Provider of the Year: **Celeste**

Carpenter is the main Dental Hygienist for Swope Health's Mobile Dental Unit. Occasionally seeing

upward of 25 patients a day, Celeste is patient, positive, and impactful in her work. She was nationally recognized by HuFriedy Group in October 2024 for her work as a Dental Hygienist.

Behavioral Health Provider of the Year:

Victoria Gunn, Outpatient Therapist, is known as a "great provider, giving high-quality care with an excellent attitude." She maintains a welcoming, supportive, and collaborative spirit that speaks volumes to her peers and patients.

Medical Provider of the Year: **Phillip**

Flemming is a Physician Assistant who always does his



best to say yes. Even while being challenged with physical mobility, he continued to make care visible by maintaining his high volume of patients, each treated with care.

Volunteer of the Year: **Jacqueline English,**

Triage Nurse, is often the first to sign up for any associate volunteer opportunity. She is an active member of the Swope Health Wellness Committee, regularly leading Walking Wednesdays, and recently joined the Employee Resource Group.

Support Award:

Bridget Locke is Director of Strategic Communications for Swope Health. In just two years, Bridget has built a best-in-class communications program from the ground up, is responsible for earning Swope Health a *New York Times* feature, consistently offers support to other organization departments, and provides high-quality results under any circumstance.

Clinic of the Year: **Swope Health Wyandotte**

was named Clinic of the Year in part for its exceptional performance in clinical quality measures. Wyandotte met or exceeded 18 of 20 clinical measures, including exceeding quality goals in the category of colon cancer screening. The measures indicate a focus of attention on quality care for patients of the clinic, which are among the most vulnerable in the metro area. Wyandotte County is consistently ranked near the bottom of the state (103rd of 105 counties) in health outcomes measuring life expectancy, smoking, obesity, chronic disease and other health conditions.

Senior Leadership Team Accolades



President and CEO **Jeron Ravin, J.D.** was named one of *Ingram's Magazine's*, "50 Missourians You Should Know." As a result of his leadership over the last six years, Swope Health's public profile has been enhanced, and the region has taken notice. "I've always wanted to go where I can be the most impactful," Ravin states. "I've always felt that the best way to be impactful with health systems is to think bigger and bolder."



Executive Vice President of Dental **Megan Krohn** was selected as one of 40 practitioners from across the country to be featured in *Incisal Edge Magazine's* "40 Under 40." The article offers mentorship tips and advice, in which Dr. Krohn offered, "Don't be afraid to fail. Fail fast and fail forward."



Chief Strategy Officer **Brandi Finocchiaro** was featured on the cover of the *Kansas City Business Journal's* "20 to Know" series, which introduces **leaders in key industries.** The article describes her role at Swope Health as "paving a future path for organizations in an everchanging profession, one of the biggest challenges a healthcare executive can undertake."



Executive Vice President of Children's Services **Dr. Kenneth Thomas** was named one of the Top Doctors of 2024 by *Ingram's* magazine.

In his feature Dr. Thomas reflected on the challenges of caring for children (when they can't always identify what's wrong) and the rewards, like seeing a former patient now fully grown and bringing in a second generation.



2024 Swope Health Shark Tank Winner: **Brandon Blalock– Narcan Vending Machines in Swope Health Central**

Since 2020, Swope Health associates have been invited to share creative, novel, and ground-breaking ideas to help improve processes and business needs through Swope Health Shark Tank, an internal associate competition.

Modeled after the popular television series “Shark Tank,” Swope Health Shark Tank offers voluntary associate teams a chance

to present ideas to benefit the health center’s operations or the people it serves. The application process involves multiple steps.

First, all formally submitted ideas are put to an organization-wide vote. Next, the three teams with the most popular ideas are assigned to a Senior Leadership Team member for mentoring.

Those teams advance to Shark Tank Live, the final round. During the event, the teams begin their pitches with a one-minute introductory video, then take three minutes to expand on their ideas. After audience Q and A and the

judges’ deliberation and scoring, the top two projects advance. A final audience vote decides on the winning idea.

In 2024, the proposal to place Narcan vending machines in Swope Health Central, presented by Swope Health associate **Brandon Blalock**, won the competition. Swope Health Board Chair **Juan Rangel**, Swope Health Board Member **Dr. Julia Vargas**, National Association of Community Health Centers Director **Gervean Williams**, and Swope Health President and CEO **Jeron Ravin, J.D.**, served as judges.

“Making Narcan easily accessible ensures that individuals and communities are better equipped to respond quickly and effectively to opioid-related crises.”

Brandon Blalock

Creating Pathways To Homeownership

In February, Swope Health and **Habitat for Humanity of Kansas City** partnered to launch the first-ever benefit program to support Swope Health associates becoming homebuyers. The purpose of the program was to create pathways for homeownership and build generational wealth. Eight participating Swope Health associates received individualized support to learn about mortgages, credit management, income-to-debt-ratio, tax readiness, and financial management. Down-payment assistance was also offered to income-eligible members. Research shows that decent and affordable housing can positively impact a family's health. "For Swope Health, this initiative is viewed as a core tenet of our mission," said **Jeron Ravin, J.D.**, President and CEO. "Not only do we have a responsibility to deliver high-quality healthcare, but also to support our associates in their efforts to achieve homebuying goals and improve their families' opportunities for better health and generational wealth."



Celebrating Swope Health's Many Cultures

On June 17, Swope Health launched an Employee Resource group, Cultural Kaleidoscope. With the support of President and CEO **Jeron Ravin, J.D.**, Director of HR Business Partners **Debra Simpson**, and a team of dedicated associates, we celebrate and honor the wide variety of cultures at Swope Health.



Investing In Our People

Champions Of Health And Wellness For Associates

As one of the leading community health centers in the region, Swope Health champions health and wellness for everyone—including associates. That's why, in 2023, the Swope Health Wellness Team was established.

"Ensuring the health and wellness of our associates is good for business," said **Josette Mitchell**, executive vice president of Behavioral Health, and co-leader of the Swope Health Wellness Team.

"Self-care contributes to our becoming our best selves and positions us to take better care of our patients, clients, and community."

With physical, emotional, environmental, financial, and social wellbeing at the fore, the Swope Health Wellness Team has spearheaded a variety of initiatives, including chair massages, Walking Wednesdays, healthy cooking demonstrations, volunteer opportunities for the MLK holiday, a group "Paint and Sip" party, and many more activities.

Interns Explore Healthcare Careers



Swope Health's internship program, overseen by Talent Acquisition Manager **Nathaniel Holley**, launched in 2024 to connect high school students interested in healthcare careers to job shadowing opportunities within our health center. The program's scope includes young collegiate leaders studying healthcare-adjacent fields, such as information technology and human resources.

Swope Health's Human Resources team posted the internship opportunity on Handshake, a talent recruiting platform, and engaged with **University of Missouri-Kansas City's STAHR** (Students Training in Academia, Health and Research) program to fill the intern slots.

After a rigorous application process, Swope Health welcomed:

- **Arbyanna Lewis**, Dental Hygiene, UMKC School of Dentistry
- **Lailah Hawkins**, Business Administration, Jackson State University
- **Caleb Kline**, Doctor of Dental Surgery, UMKC School of Dentistry
- **Hannah James**, Radiologic Technology, Metropolitan Community College
- **Dallas Allen**, Management Information Systems, Park University
- **Lavanya Ghanatheey**, Computer Science/Data Science, UMKC

Throughout the summer, the interns supported various areas of Swope Health and, in late July, gave presentations to our Senior Leadership Team about their experiences.

Caleb, who spent his time working in clinics, enjoyed the connections he made with associates, as well as with patients. "The work felt purposeful, like I was making a difference," he said.

Lailah, who shadowed Human Resources, had similar insights. "I loved working with the team to reach a common goal," she said. "I enjoyed fostering relationships and learning about how much of a pillar that Swope Health is in the community."



Social Drivers of Health Series

Swope Health's commitment to providing whole-person care is spotlighted in its public outreach program, the Social Drivers of Health series of town halls.

Drawing hundreds of participants, the Social Drivers discussions create educational and action-oriented forums on topics like economic equity and affordable housing in Kansas City. The free series, held at the **Kansas City Public Library** and sponsored by **REACH Healthcare Foundation**, engages experts in complex topics.

In 2024, Swope Health hosted **Ebony Reed**, co-author of ***Fifteen Cents on the Dollar: How America Made the Black-White Wealth Gap***, to discuss economic equity. This was before she appeared on MSNBC, ABC, CBS, and CNBC, and well before her book became a best-seller and cited as the definitive book on the topic.

Swope Health also called together a panel of experts with provocative ideas on creating affordable housing in Kansas City. The panel (pictured above, left to right) consisted of **Jeron Ravin, J.D.**, Swope Health President and CEO (moderator); **Steven Anthony**, Economic Development Corp. of Kansas City; **Jennifer Tidwell**, Health Forward Foundation; **Terrell Jolly**, Integrity Capital Management; **Pat Jordan**, Pat Jordan & Associates; and **Blaine Proctor**, Housing and Community Development for the City of Kansas City.

The 2025 series kicked off with a special luncheon recognizing Women in Healthcare on May 21. This event featured **Dr. Uche Blackstock**, an emergency physician, bestselling author, and founder of a training/advocacy consultancy. Honored guest Kansas Governor **Laura Kelly** was recipient of the inaugural Dr. Dhana Rengachary Award for Excellence in Healthcare. The event was emceed by **Cynthia Newsome** and **Rae Daniel**, KSHB 41.



Swope Health Village – Our Commitment to Health Equity

Where you live, your education, and the general socioeconomic status of your neighborhood are determinants in your health. This fact is often measured by ZIP code, where, as a kind of shorthand, we identify the areas with poor health outcomes.

In Kansas City, those areas are on the East Side, the heavily segregated and disinvested areas with food deserts, poor infrastructure, and high rates of gun violence and crime. It is not a coincidence. These areas have a complex history of engineered segregation and concentrated

poverty, perpetuated by law and policy.

As an organization founded during the mid-1960s' aspirational war on poverty, Swope Health has long understood the need for solutions that prioritize racial equity, educational opportunity, and economic vitality to improve health and wellness. Indeed, Swope Health was established with a vision of generating economic opportunity while improving health and wellness.

Today, we are doubling down on this vision with our purpose-built approach called Swope Health Village.

Landmark Location


The location of Swope Health Village is a nearly 12-acre parcel on Swope Parkway between 59th and 60th streets, anchored by the former

St. Louis Church and Rectory, within the Town Fork Creek Neighborhood, Kansas City, MO 64130.

The formidable church was started in 1924, originally as a Masonic Temple with capacity for seating more than 500 people in the first-floor auditorium, and an additional 700 seats in the second-floor balcony. In 1944, St. Louis Parish acquired the property and completed construction and additional improvements for the 400 families in the parish.

Over time, the parish diminished and was amalgamated with Saint Therese Little Flower Parish.

The nearby Swope Ridge Geriatric Center, founded in 1957, was also struggling. The city closed the facility in 2022, leaving a gap in care for seniors. In January 2023, the



“We are willing to challenge systemic neglect. We are willing to demonstrate the power of intentional investment toward a more purpose-built environment, an intergenerational community that models success and healthy outcomes.”

Jeron Ravin, J.D., President & CEO

swope HEALTH VILLAGE

PROPOSED PLAN



- | | | | |
|--------------------------|------------------------|------------------------|------------------------------|
| 1 59th St Plaza Entrance | 6 SE Parking-60 stalls | 11 Water Feature | 16 Garden House |
| 2 Mid-Block Promenade | 7 Central Plaza | 12 N Parking-80 stalls | 17 Orchard/Vegetable Gardens |
| 3 Playground | 8 Activity Lawn | 13 Walking Loop | 18 Interior Courtyard |
| 4 Therapy Terrace | 9 Pavilion/Gazebo | 14 Amphitheater | 19 SW Parking-35 stalls |
| 5 Sports Courts | 10 Terrace Plaza | 15 Prairie Garden | 20 Woodland Gardens |

city issued a call for development proposals of the area – and Swope Health was awarded the contract.

“Purpose-built”

Swope Health’s goals are to demonstrate improved racial equity, improved health outcomes, and increase upward mobility of those in the Swope Health Village community. The project will unfold in phases with quality housing, healthcare, mental health resources, and community gathering places and gardens.

A purpose-built community is one focused on the holistic well-being of its community, providing an

environment of ready access to care and resources. The village exists as a hub to help the community thrive in all aspects of life – education, employment, social connections, health and economic opportunity.

Swope Health Village also addresses critical needs: behavioral health resources, stable housing, a safe community, integrated care, a self-sustaining campus providing economic and social development.

A Multi-Phase Development

While detailed construction timelines are still in development, the initial phase of Swope Health

Village will kick off in 2025 with ground breaking for Behavioral Health housing. Two apartment buildings, with 15 units each, will offer independent living resources. A community center is also in the plan.

Later phases will include up to 200 affordable housing units, and two additional apartment buildings for Behavioral Health housing, provided in clustered apartments. Subject to additional fundraising, development could also feature an outdoor amphitheater, sports grounds, walking trails and playgrounds, as well as preservation of the St. Louis Church.

Value Creation



KidsCARE Initiative Helps Families Keep Their Household Safe

In 2024, the Surgeon General of the United States issued a statement outlining the “devastating and far-reaching consequences that firearm violence poses to the health and well-being of the country.” It was a declaration of gun violence as a public health crisis.

Recognizing that firearms are the leading cause of death in children and adolescents in the U.S., Swope Health is committed to providing education on gun safety and harm prevention. Part of this campaign, led by **Dr. Kenneth Thomas**, executive vice president of children’s services, includes offering free gun locks made available through a collaboration with **Grandparents for Gun Safety**, a Kansas City-based non-profit committed to gun safety education and advocacy.

Swope Health’s pediatric and KidsCARE clinics invite parents to discuss gun safety, privately and without judgment, in every child’s visit, as part of our childhood injury prevention program. Along with gun locks, the clinics provide gun safety educational materials to help families keep their household safe.

“We simply want to help families keep their firearms safely stored and secure,” said Dr. Thomas. “We know kids are curious and love to handle things they see. A gun lock is an effective way to prevent accidental injuries.”

Over the last two years, the **Kansas City Plaza Rotary Club** has raised \$6,500 to buy the locks through Grandparents for Gun Safety for the Swope Health campaign.

KCK Back To School & Health Fair

The annual Wyandotte County Back to School & Health Fair is the biggest community event in Kansas City, Kansas for families preparing for the upcoming school year. Each year, hundreds of families in the community gather for free school supplies, activities, health and wellness screenings, community resources, and food and refreshments.

With our presence growing in Kansas, Swope Health has made an annual tradition of participating in the event.

On August 10, 2024, Swope Health’s medical, dental, and communication teams provided health and dental screenings, as well as information about our services to fairgoers. Kansas City, Kansas Mayor **Tyrone Garner** stopped by our booths to learn more about the services we offer.





87th Street Place – A New Behavioral Health Residential Treatment Facility

Swope Health expanded its services in March 2024 with the launch of 87th Street Place, an eight-bed residential facility for adults with mental illness and developmental disabilities.

Although Swope Health has operated residential facilities since 1991, this marks the first residential treatment facility purpose-built for people with co-occurring developmental

disabilities and mental illness.

The facility, 6412 E. 87th St., becomes part of the Swope Health's healthcare hub in the Hickman Mills community. It is the third center to open in Hickman Mills since 2022, joining the Swope Health–Hickman Mills clinic and Swope Health KidsCARE Tenney Pediatrics. **It also caps a \$7 million investment in the Hickman Mills region over the last two years.**

87th Street Place is managed 24 hours a day, seven days a week, by qualified mental health professionals. Workers at the center assist residents with healthcare needs, nutrition, life skills, and coping strategies. The center's care team is made up of

mental health technicians, a home supervisor, and licensed practical nurse.

Residents at 87th Street Place were formerly living in acute and long-term care hospitals. The new facility helps remove barriers to mental healthcare and supports the development of independent living skills.

The new facility is designed with a focus on personal safety in a welcoming, nurturing environment, filled with lively artwork and natural light. Residents have private bedrooms and share a communal kitchen, dining room, laundry room, and relaxation space. The gated yard features a gazebo, and soon, a grill, for outdoor dining.

Value Creation



Signing ceremony for the Medical Assistant Training program.
(L-R) Clyde McQueen, Full Employment Council President & CEO; Jeron Ravin, J.D., Swope Health President & CEO; and Dr. Kimberly Beatty, MCC Chancellor.

A Win-Win-Win Collaboration

Swope Health announced a new Medical Assistant Training program with **Metropolitan Community College** and the **Full Employment Council**. This is an innovative win-win-win collaboration: it provides access to professional healthcare training, addresses the local and national shortage of medical assistants, and provides rewarding careers.

Students are hired into the U.S. Department of Labor-approved apprenticeship, trained in curriculum from MCC and Swope Health, and then become eligible to take the certification exam. Students who earn certification and are hired by Swope Health are eligible for tuition reimbursement for the training.

According to the U.S. Bureau of Labor Statistics, there are about 119,800 openings for medical assistants a year. Employment of medical assistants is expected to grow 15 percent through 2033 – much faster than average for all occupations.

Medical assistants are a key member of the healthcare team, often the first person you encounter in a medical visit. Medical assistants interview patients, check vital signs, review medical history, collect lab samples, and assist with patient examinations, among other tasks.

The program kicks off with a cohort of six to 10 students in June 2025. Initial classes will be conducted virtually, with plans to move to a hybrid format to include classes at Swope Health Central as well as MCC-Penn Valley's Health Science Institute.

“We are proud of this strategic collaboration and joint commitment to training the next generation of professionals in delivering high-quality comprehensive care.”

Jeron Ravin, J.D., President & CEO

A Thank You To The Community

For four years, Swope Health hosted an annual community celebration at Loews Kansas City Hotel Event Lawn, an extraordinary evening of festivity with partners and community leaders.

The event is a chance to connect and network, to reflect on the year's accomplishments and look ahead. In 2024, the spotlight was on Swope Health Village, a \$100 million phased development that will offer senior housing, behavioral health units, and supportive services on one East Side campus.



Jeron Ravin, J.D. and E. Frank Ellis

Jeron Ravin, J.D., President and CEO of Swope Health was honored to welcome special guest Swope Health Founder **E. Frank Ellis**. He quickly pointed out, "Frank started this venture when he was 23 years old, and he is still very much invested and interested in the success of Swope Health."

We are so appreciative of our sponsors' generous support of Swope Health's 2024 Community Celebration. Your philanthropic leadership makes a lasting impact in our health center and in the community we serve!

In 2025, the celebration is scheduled for September 24, again at Loews.



Thank You To Our Contributors

AcruxKC
 Dr. Linda Adkison
 Advanced Physician Recruitment
 Aetna
 Alpha Phi Alpha Fraternity, Inc. –
 Beta Lambda Chapter
 Bell Knott Architects
 Benco Dental
 Blue Cross Blue Shield of
 Kansas City
 Bombas
 Carl R. Boyd
 Byrne Pelofsky + Associates, LLC
 Jennifer Cannady
 Capital One – NMTC
 CareSource
 Catalent Pharma Solutions LLC
 Centers for Medicare and Medicaid
 Services
 Central Bank of Kansas City
 Children's Services Fund of Jackson
 County
 Cigna Health Care of Kansas/
 Missouri Inc.
 City of Kansas City Public Health
 Department/Health Levy
 City of Kansas City, Missouri
 Delta Dental of Missouri
 El Centro
 Ewing Marion Kauffman Foundation

Donald J. Hall
 Health Forward Foundation
 Health Resources and Services
 Administration
 H&R Block and Marion and Henry
 Bloch Family Foundation
 IFF
 IodiTech
 Charlie Jackson
 Jackson County Combat
 Kansas City Monarchs
 Molly Kemper
 Nancy L. Kemper
 Kerry Knott
 Tom Kokjer
 Lead to Read Kansas City
 Mike Lochmann
 Lockton Companies
 MARC - Mid-America Regional
 Council
 Dr. Abbie McKnight
 Menorah Health Foundation
 Missouri Department of Economic
 Development
 Missouri Department of Health and
 Senior Services
 Missouri Department of Social
 Services
 Missouri Primary Care Association
 Connor Nowalk

Perfect Promotions
 PGAV
 PointCare
 Brenda Powell
 Prairie Capital Management
 Cindy Raedle
 Ralph C. Johnson & Company, P.C.
 Reach Healthcare Foundation
 The Research Foundation
 Avni Shridharani
 Angela Smart
 Mary Spangler
 State of Kansas
 State of Missouri – Senator Barbara
 Anne Washington
 Karen Steffen
 James R. Westbrook
 Eric Wilkinson
 Gervean Williams
 Eugene Wilson
 Wyandotte Health Foundation

And many more businesses, nonprofit organizations, associations, and individuals who support our events for the community, including First Saturday Food and Family Essentials programs, health fairs, Treat Town, and so much more.



The Swope Health Foundation was formed in 1985 to promote, assist, and fund health center initiatives, and encourage gifts, bequests, and endowments to carry out the objectives of the health center.

The Swope Health Foundation also leads major fundraising campaigns for Swope Health programs. Recent capital campaigns include Swope Health Village capital campaign, PACE KC Adult Wellness Center capital campaign, Kansas City Kansas Community Education, Health and Wellness Center capital campaign, and a campaign to open the Swope Health KidsCARE Excelsior Springs Clinic.

WAYS YOU CAN **GIVE**

ONLINE/MAIL You can donate online at swopehealth.org/donate or scan the QR code.

Mail your check payable to:

Swope Health, c/o: Donations

3801 Dr. Martin Luther King Jr. Blvd.

Kansas City, MO 64130

IN-KIND We accept in-kind items such as printing, advertising, and supplies. We accept non-perishable food items, new clothing, shoes, and personal hygiene products for our homeless outreach program. For more information, please reach out by email at info@swopehealth.org.

VOLUNTEER Volunteers are always welcome to serve as greeters, information desk staff, and patient navigators. If you want to help, please email info@swopehealth.org.

SCAN TO DONATE





3801 Dr. Martin Luther King Jr. Blvd.
Kansas City, MO 64130

SCAN TO DONATE



swopehealth.org f X @ in

OUR MISSION

To improve the health and wellness of the community by delivering accessible, quality, comprehensive patient care.

OUR VISION

To be a regional provider of choice in the communities we serve.



In 2024, Swope Health celebrated the newest unit in a growing fleet of mobile clinics. The new children's mobile dental unit was purchased with funds generously donated by Resurrection United Methodist Church. (Read more on page 19.)