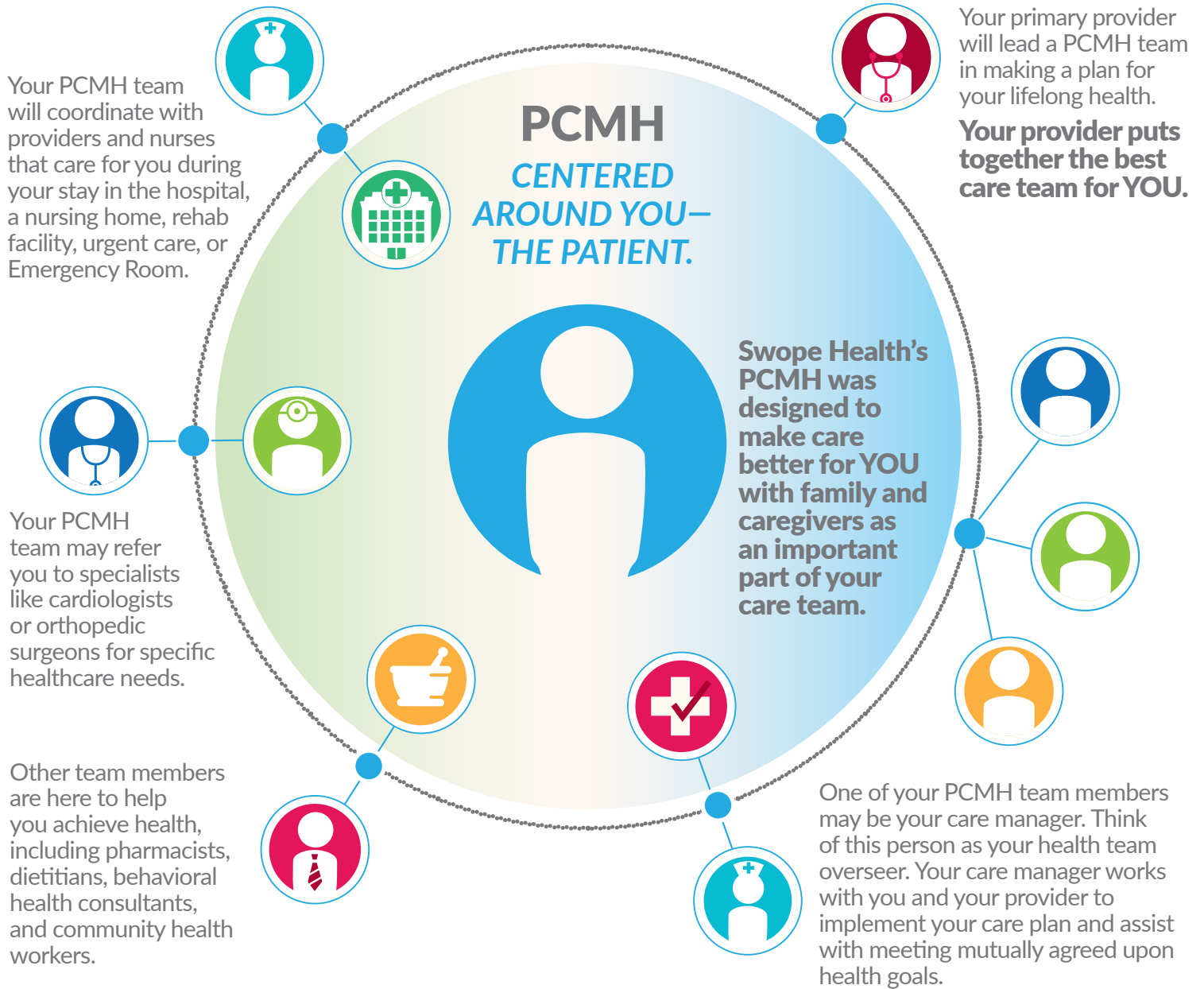


# PATIENT CENTERED MEDICAL HOME

A (PCMH) is a medical setting where a team of health professionals work together to provide all of your medical, behavioral and health education needs. **YOU** are the most important person on the healthcare team. Patient-centered is a way of saying that you are the focus of your healthcare.



## WHY IS A PCMH BETTER FOR YOU?



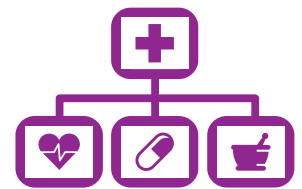
### MORE EFFICIENT CARE

- You can talk with members of your PCMH team whenever you need us and you'll get appointments quickly.



### BETTER COORDINATED CARE

- Your PCMH team will talk with you and learn about you, your family and your life situation. We will update your records every time you seek care and recommend the best treatments for you.
- Your PCMH team may refer you to specialists, set up appointments, and make sure specialists have the information they need to best care for you.



### MORE INFORMED CARE

- Your PCMH team uses technology, such as electronic medical records and the Patient Portal, to help make sure that we are always on the same page.
- Your PCMH team may provide you with access to telemedicine, if for any reason you cannot come in for an appointment.

To schedule an appointment or for more information, call **816-923-5800**.